

# ∫ PANDA®

*Variable energy light weight  
dynamic cone penetrometer*

**SOL ∫ SOLUTION**  
*Solidly-based innovation*

**ENGINEERING**

**SOIL TESTING  
AND GEOTECHNICAL  
EQUIPMENT**

**RESEARCH AND  
DEVELOPMENT**

**TECHNICAL TRAINING**

**WWW.SOL-SOLUTION.COM**

# PANDA®

## Advantages

- Conception and development by Sol Solution
- Variable strike energy input from operator adapted to relative ground resistance
- Measurement of variable strike energy and depth for each blow provides instantaneous calculation of ground resistance
- Lightweight, portable and single person operation
- Automatic data acquisition and storage
- Integrated GPS
- Data management software GeoSprint
- Penetrographs and strike information viewable on site
- Reference curves and automatic inbuilt calculation of encountered anomalies viewable on site
- Several languages available



## Characteristics

Case dimensions : L 55 x l 43 x H 21 cm

Overall weight with case : 18,5 kg

2 cm<sup>2</sup> fixed cones and 4 cm<sup>2</sup> lost cones

Colour touchscreen

## Options

- Mechanical rod extractor
- Various automatic hammering systems associated
- Kit wheels on suitcase



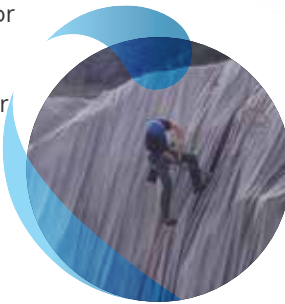
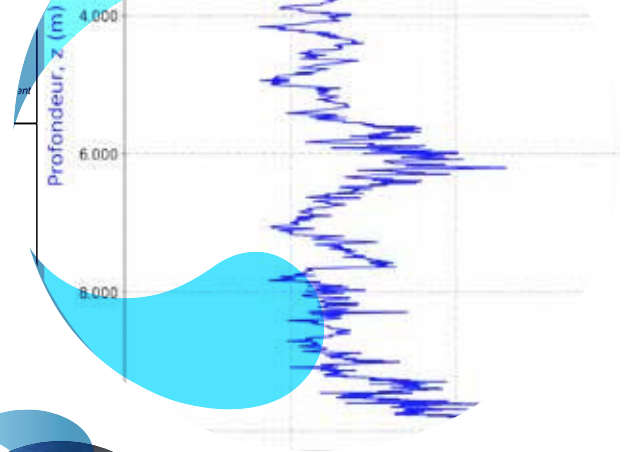
# SOIL INVESTIGATIONS

## Aim

**TO OPTIMISE INVESTIGATION AND GEOTECHNIC DIAGNOSIS IN SOILS AND UNBOUND MATERIALS**

## Advantages

- Geological cross-section reference library
- Access to test results from horizontal, sloping, or steep sites
- Restricted access locations unavailable to larger or cumbersome equipment
- Geotechnical correlation (CBR, CPT, SPT, Cu...)
- Selection of outputs relating to scales, measurement units, elevation, water level.



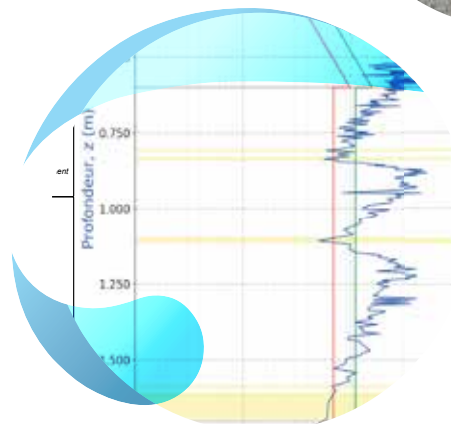
# COMPACTION CONTROL

## Aim

**TO VERIFY COMPACTION RELATING TO TRENCHES, EXCAVATIONS, UTILITY INSTALLATIONS, EARTHWORKS, EMBANKMENTS, DIKES, ROADS, ...**

## Advantages

- Full depth control in one single operation
- Compaction homogeneity and layer thickness control (compacted lift thickness)
- Identification of individual structural and/or material layers (Base, Sub-Base, Backfill, ...)
- Standard database (GTR soil classification) and compaction quality.
- Inbuilt international soil classifications also available (USCS, AASHTO, DIN 1896, PG3,...)
- Various automatic calculation for compaction anomalies
- Automatic creation of reports



## Conformity

Standard **NF P 94-105**

Fascicule **70**

**COFRAC**

**SETRA** Guide





**SOL  $\int$  SOLUTION**  
*Solidly-based innovation*

**SOL SOLUTION**

ZA des Portes de Riom Nord  
23 avenue Georges Gershwin  
BP 178 - 63204 RIOM Cedex  
FRANCE

**T** : +33 (0)4 73 64 74 84  
**F** : +33 (0)4 73 64 74 80  
**M** : [contact@sol-solution.com](mailto:contact@sol-solution.com)

[WWW.SOL-SOLUTION.COM](http://WWW.SOL-SOLUTION.COM)