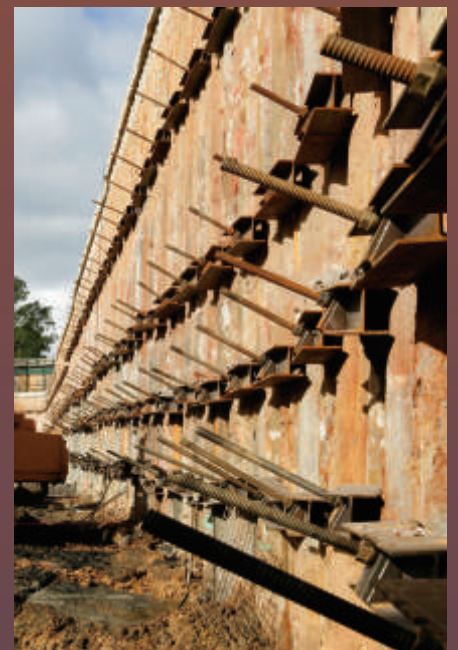


# DFI-PFSF Piling & Ground Improvement Conference 2022 Program & Schedule

16-18 November 2022 | ICC Sydney | Australia



PILING AND FOUNDATION  
SPECIALISTS FEDERATION



[www.dfi.org/PFSF2022](http://www.dfi.org/PFSF2022)

# Welcome to DFI-PFSF Piling & Ground Improvement Conference

To make the most of your experience at the conference, here is some general information to assist you throughout the event.

## Wi-Fi Access

Wi-Fi access is provided at no charge by the exhibition centre. The network is "ICC Sydney Public Wi-Fi." No password is required.

## Online Proceedings Link

To access the conference technical papers, simply login into MyDFI at [www.dfi.org](http://www.dfi.org) and from the left-hand side menu select 'My Online Proceedings.'

After the conference, the final PowerPoint presentations and posters will be uploaded.

## General Photography

Photos will be taken throughout the program to capture as much of the conference activity as possible and will be posted online for viewing after the event.

Unfortunately, we cannot guarantee that all exhibit displays or presenters will be photographed.

Please note: DFI reserves the right to use these images on the DFI website, in *Deep Foundations* magazine, in newsletters and for other publicity materials. As a registrant/participant in the conference you are consenting to the use of said images as described above.

## Conference Banquet

On the evening of Wednesday, November 16, delegates and other guests will enjoy the conference banquet with "surprise" entertainment. Tickets are AUD \$150, not included in delegate registration fee, and must be purchased separately.

## Professional Development Hours (PDHs)

Professional Development Hours (PDHs) will be provided after the completion of each session evaluation through the conference module. Attendees are responsible for determining whether or not these PDHs are accepted by their respective licensing board.

## Organizing Committee

Mark Johnson, Executive Officer, *Piling and Foundation Specialists Federation*

Theresa Engler, Executive Director, *Deep Foundations Institute*

Angie Gibble, Director of Events, *Deep Foundations Institute*

Valerie Sobczak, *Events Coordinator, Deep Foundations Institute*

## Technical Program Committee

Slav Tchepak, P.Eng., Technical Program Committee Chair, *Keller Foundations*

Matthew Glisson, P.E., Director of Technical Activities, *Deep Foundations Institute*

Jaime Cettina, Professional Development Coordinator, *Deep Foundations Institute*

## Co-Chairs

Bruce McPherson, *Douglas Partners Pty Ltd*

Harry Poulos, D.Sc. Eng., *Coffey, a Tetra Tech Company*

Patrick Wong, *PKW Geosolutions Pty Ltd*

## Committee

Stephen Buttlings, Ph.D., *National Geotechnical Consultants*

Gary Chapman, P.E., Ph.D., *Golder Associates*

Matthew Duthy, MIEAust, CPEng., *Aurecon Group*

Stephen Gamble, *Douglas Partners Pty Ltd*

Tom George, *Wagstaff Piling Pty Ltd*

Michal Krzeminski, *Keller*

Martin Larisch, Ph.D., *Jacobs NZ*

Allan McConnell, *Insitu Geotech Services*

Robert May, *Golder Associates*

Richard Merifield, Ph.D., *Douglas Partners Pty Ltd*

Peter Mitchell, MIEAust, CPEng., *Aurecon Group*

Nic Morgan, *ACCIONA Geotech*

Julian Seidel, Ph.D., *Foundation QA*

Pawan Sethi, *Coffey, a Tetra Tech Company*

Doug Stewart, Ph.D., *Golder Associates*

Ondrej Synac, *CMW Geosciences*

Philippe Vincent, MSc, *Menard Oceana*

Nick Wharmby, CPEng., *March Constructions (NZ)*

# Conference Program Schedule\*

## Wednesday, 16 November | All Functions are in Parkside 1

- 12:30 - 17:00 Exhibitor Move-In and Poster Display Set-Up
- 12:30 - 18:00 Conference Registration
- 18:00 - 20:00 Welcome Reception in Exhibit Hall

## Thursday, 17 November | All Plenary Sessions are in Parkside 2

- 07:00 - 17:30 Conference Registration and Exhibits with Poster Displays
- 07:00 - 08:00 Networking Breakfast in Exhibit Hall
- 07:00 - 08:00 Onsite Speaker Orientation
- 08:00 - 08:30 Welcome and Opening Remarks  
Mark Johnson, PFSF Executive Officer and Diarmaid Long, PFSF President | Keller

### OPENING PLENARY SESSION | Moderator: Harry Poulos, D.Sc. Eng., Coffey | Australia

- 08:30 - 09:30 KEYNOTE LECTURE | The Geotechnical Industry's Role in Sustainable Development  
Kimberly Martin, Ph.D. | Keller NA | United States
- 09:30 - 10:15 INVITED SPEAKER | Case Studies: Effects of Piling on Adjacent Piles and Structures in Soft Soils  
Stephen Gamble, B.Eng. | Douglas Partners | Australia
- 10:15 - 10:40 Remediation of Rail Structures Impacted by Landslides Using Sleeved Bored Piles  
Paul Hewitt, B.E., M.Eng.Sc, MICE, FIEAust, CP.Eng. | WSP | Australia
- 10:45 - 11:00 Networking Break in Exhibit Hall with Poster Displays

### SESSION TWO | Moderator: Patrick Wong, PKW Geosolutions | Australia

- 11:05 - 11:30 Construction and Stability Risks for Fluid Supported Deep Excavations and their Effects on Design Parameters  
Martin Larisch, Ph.D. | Jacobs NZ | Australia
- 11:30 - 11:55 Case Study of Geotechnical Challenges Involving Ground Improvement and Successful Completion of Pile Foundations in a Rail Project in India  
Venkata Dronamraju, Ph.D. | Rail Vikas Nigam | India
- 11:55 - 12:20 A Novel Ground Improvement and Deep Foundation System, Using PAILEs  
Przemyslaw Adam Zakrzewski, M.Sc. | Paile Solutions | Australia
- 12:20 - 13:20 Networking Lunch

### SESSION THREE | Moderator: Bruce McPherson, Douglas Partners | Australia

- 13:20 - 14:20 KEYNOTE LECTURE | Forms of Contracting, Approaches to Risk Sharing and the Impact on Innovation, Productivity and Project Outcomes  
Phil Oxley, B.Sc. (Hons), MBA | Mott MacDonald | Australia
- 14:20 - 14:50 Westgate Tunnel Project, MelbourneNorthern Portal - Ground Engineering Works  
Serhat Baycan | Bauer Foundations Australia | and Arash Judi | Wagstaff Piling | Australia
- 14:50 - 15:15 Economic Design of Piling Platforms on Coarse Grained Subgrade  
Patrick Wong | PKW Geosolutions | Australia
- 15:15 - 15:40 Modification in Current BRE Approach for Designing Piling Rig Working Platforms on Soft Subgrades  
Amir Shahkolahi, B.E., M.Eng.Sc., MIEAust | Global Synthetics | Australia
- 15:40 - 16:05 Ground Improvement of Granville Harbour Wind Farm Foundations Using Controlled Modulus Columns  
Jordan Jong, B.Eng. | Menard | Australia
- 16:05 - 16:30 Networking Break in Exhibit Hall with Poster Displays

### SESSION FOUR | Moderator: Nic Morgan, ACCIONA Geotech | Australia

- 16:30 - 16:55 Case Studies Demonstrating the Effectiveness of Vibro-Replacement Stone Columns in Variable Soil Types  
Lee Buhagiar | Coffey | New Zealand
- 16:55 - 17:20 Pile Design Using CPT Results: The "LPC Method"  
Fred Verheyde | Douglas Partners | Australia
- 17:20 - 17:45 Design and Construction of the Deepest CFA Piles in Australia  
Eric Chong, Ph.D., B.Eng. | Keller | Australia



## SESSION FOUR CONTINUED

- 17:45 - 18:10 130m Deep Bored Piles - A New Superlative  
*Serhat Baycan | Bauer Foundations Australia*
- 19:00 - 22:00 Conference Dinner and Entertainment | Parkside 1

## Friday, 18 November | All Plenary Sessions are in Parkside 2

- 07:00 - 17:30 Conference Registration & Exhibits with Poster Displays
- 07:00 - 08:00 Networking Breakfast
- 07:00 - 08:00 Onsite Speaker Orientation  
Exhibits close at 15:00

## SESSION FIVE | Moderator: Stephen Gamble, Douglas Partners | Australia

- 08:00 - 08:05 Welcome
- 08:05 - 09:05 KEYNOTE LECTURE | The Application of Dynamic Analyses for Testing of Non-Uniform Deep Foundations  
*Samuel Paikowsky, Ph.D., P.E. | GeoDynamica | United States*
- 09:05 - 09:30 Comparison of Cement Injection Process for Deep Cement Mixing  
*Soon-Hoe Chew, Ph.D., P.E. | National University of Singapore | Singapore*
- 09:30 - 10:00 Comparison of Large Plate Load Test Result with Predicted Deformation in Deep Vibro Techniques Treated Ground for Iron Ore Stockpile Yard in Vietnam  
*William Chong | Keller Foundations (SE Asia) | Singapore*
- 10:00 - 10:30 Networking Break in Exhibit Hall with Poster Displays

## SESSION SIX | Moderator: Stephen Buttlng, Ph.D., CPEng. | National Geotechnical Consultants | Australia

- 10:30 - 10:55 Design Considerations of Laterally Loaded Free Head Piles in Engineering Practice  
*Min Cai, Ph.D. | FSG Geotechnics and Foundations Specialists | Australia*
- 10:55 - 11:20 Approximate Assessment of Basement Wall Effects on Foundation Performance  
*Helen Chow, Ph.D. | Aurecon | Australia*
- 11:20 - 11:45 Design, Modelling and Construction of a 12-Sided Diaphragmed Walled Shaft  
*Stephen Buttlng, Ph.D., CPEng. | National Geotechnical Consultants | Australia*
- 11:45 - 12:45 Networking Lunch

## SESSION SEVEN | Moderator: Ondrej Synac, CMW Geosciences | Australia

- 12:45 - 13:45 KEYNOTE LECTURE | Driven Displacement Pile Ground Improvement for Liquefaction Mitigation  
*Armin Stuedlein, Ph.D., P.E. | Oregon State University | United States*
- 13:45 - 14:35 Galataport Istanbul, Turkey: An Overview of the Special Solutions Adopted with Focus on the Liquefaction Countermeasures  
*Zaher Elhajj | Trevi S.p.A | Australia*
- 14:35 - 15:00 Networking Break in Exhibit Hall with Poster Displays
- 15:00 - 18:00 Exhibit Dismantle

## SESSION EIGHT | Moderator: Slav Tchepak, P.Eng., Keller Foundations | Australia

- 15:00 - 15:30 INVITED SPEAKER | Interrogating a PDA Report; A Rational Assessment  
*Dion Denes, M.Eng.Sc., CPEng. | Golder Associates | Australia*
- 15:30 - 15:55 Application of Pile Test Data for the Foundation Design of a Rail Viaduct at Carrum  
*Suthagaran Visvalingam | WSP Australia | Australia*
- 15:55 - 16:20 Rapid Load Testing of Foundation Piles – An Update on a Proved Test Method  
*Marcel Bielefeld, M.Sc., M.Sc.BA | Allnamics Geotechnical Experts | Netherlands*
- 16:20 - 16:45 Existing Pile Length Assessment Using Geophysical and Low Strain Testing Methods  
*Bruce McPherson | Douglas Partners | Australia*
- 16:45 - 17:00 Closing Remarks

# Technical Poster Displays\*

## Case Studies with Lessons Learned

Nearshore Pile Construction Experience in Burnie, Tasmania  
*Thomas Scott, Jacobs, Australia*

## Design and Construction Solutions to Foundation Problems

Innovative Integrated Jet Grout and Contiguous CFA Piled Solution for Complex Deep Shoring Wall in Soft Soils – Retaining Structural Design and Analysis  
*Eric Chong, Ph.D., B.Eng., Keller, Australia*

The Need for Air Control in Down The Hole Hammer Casing Advancement Drilling  
*Frank Purcell, Mincon, United States*

Urban Challenges in Design, Co-ordination and Construction of Deep Foundations and Retaining Walls  
*Pawan Sethi, BEng (Hons), M.Sc., C.Eng., MICE, CP.Eng., FIEAust, NER, Coffey (A Tetra Tech Company), Australia*

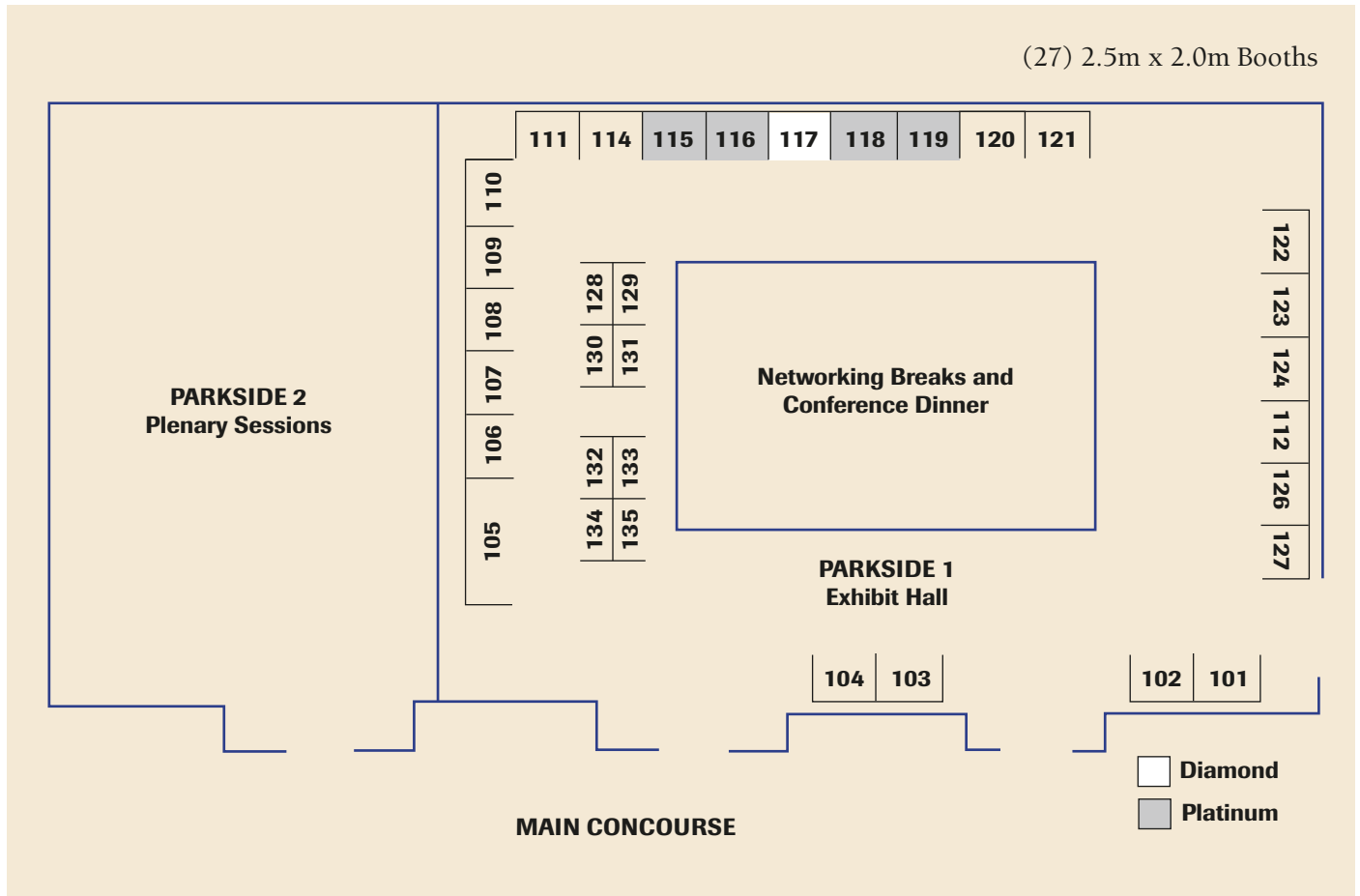
## Ground Improvement for Structural Support and Retention Works

Soil Stabilization for COW Works has Proven Its Function  
*Karsten Beckhaus, Dr.-Ing., BAUER Foundations, Germany*

Working Platforms for Tracked Plant Over Various Subgrade Types – BR470 Design Guideline and a Revised Approach to Stabilisation Design with Multiaxial Hexagonal Geogrids  
*John Buckley, Tensar International, Australia*



# Exhibit Floor Plan



## Exhibiting Companies

- |  |                                    |
|--|------------------------------------|
| 117: DIAMOND: Soilmec Australia        | 114: Casagrande                    |
| 115: PLATINUM: GFWA                    | 120: Superior Foundation Equipment |
| 116: PLATINUM: Keller                  | 121: ACCIONA Geotech               |
| 118: PLATINUM: Wagstaff Piling Pty     | 122: HMI                           |
| 119: PLATINUM: Pile Dynamics, Inc.     | 123: Ischebeck Titan Australia     |
| 101: RGE                               | 124: Antec Concrete                |
| 102: Pilecom Equipment                 | 126: Allnamics                     |
| 103: Kephix                            | 127: Liebherr – Australia          |
| 104: Bauer Equipment Australia Pty Ltd | 128: Foundation Technologies       |
| 105: DFI & PFSF Registration Area      | 129: Pilequip                      |
| 106: Menard Oceania                    | 130: Piletest                      |
| 107: Global Synthetics                 | 131: Austral Construction          |
| 108: IQIP Australia                    | 132: Kennametal                    |
| 109: Bauer Foundations Australia Pty   | 133: Tensar / Geofabrics Australia |
| 110: Piling Solutions Australia        | 134: Landpac Technologies Pty Ltd  |
| 111: Junttan Pty Ltd                   | 135: Insitutek Pty Ltd             |
| 112: Rocscience, Inc.                  |                                    |

# Exhibitor List



## DIAMOND SPONSOR

### Soilmec Australia | Booth 117

19 Precision Place, Mulgrave, NSW 2756 Australia

Edward Alvarez [e.alvarez@soilmec.com.au](mailto:e.alvarez@soilmec.com.au) +61 407 165 265

Soilmec Australia is a subsidiary of Soilmec S.p.A (Italy) – a leader in design, manufacture and distribution of equipment for the ground engineering industry. Soilmec S.p.A. was established in 1969, and since then Soilmec has always developed safe, innovative, cutting-edge technologies and provided the construction industry the full spectrum of equipment solutions. Soilmec equipment is used every day on jobsites all around the world for bridges, viaducts, motorways, tunnels, underground lines, railways and buildings of all types.

## PLATINUM SPONSORS

### GFWA | Booth 115

13/15 Lyonpark Road, Macquarie Park, NSW 2113 Australia

[www.gfwa.com.au](http://www.gfwa.com.au)

Chris Nobes [c.nobes@gfwa.com.au](mailto:c.nobes@gfwa.com.au) +61 413 746 200

A subsidiary of Soletanche Bachy, GFWA is a leading geotechnical & foundations contractor with more than 40 years of experience in Australia. Our wide range of services, which includes diaphragm walls, piling, cut-off walls, microfine cement injection grouting, ground anchors, etc., will ensure that you will receive the best service for the most affordable price.



### Keller | Booth 116

2 Lyon Park Road, Suite G.01, Macquarie Park, NSW 2113 Australia

[www.keller.com.au](http://www.keller.com.au)

Lea Cochrane [lea.cochrane@keller.com.au](mailto:lea.cochrane@keller.com.au) +61 2 8866 1100

Keller develops innovative, practical and cost-effective solutions to geotechnical challenges including deep foundations, ground improvement, groundwater control, liquefaction mitigation, releveling structures, slope stabilization, support of excavation, underpinning and instrumentation and monitoring. Keller is the largest geotechnical specialty contractor in the world.



### Pile Dynamics, Inc. | Booth 119

30725 Aurora Road, Cleveland, OH 44139 United States

[www.pile.com](http://www.pile.com)

Jim Zammataro [jzammataro@pile.com](mailto:jzammataro@pile.com) +1 216 831 6131

Pile Dynamics, Inc. develops, manufactures and supplies QA testing systems for the deep foundations industry, including: Pile Driving Analyzer®, GRLWEAP14 Wave Equation Software, Thermal Integrity Profiler, CHAMP-Q (CSL), SQUID – (bottom cleanliness inspection), SHAPE® (verticality evaluation and radius), Static Load Tester, Pile Installation Recorder and Pile Integrity Tester. PDI's innovative state of the art systems are used in more than 100 countries, commercialized through PDI's worldwide representatives.



### Wagstaff Piling Pty | Booth 118

1 Ashgrove Crescent, Ashgrove, QLD 4060 Australia

[www.wagstaffpiling.com.au](http://www.wagstaffpiling.com.au)

John Wagstaff [jwagstaff@wagstaffpiling.com.au](mailto:jwagstaff@wagstaffpiling.com.au) +61 437 631 708

Wagstaff Piling was founded by John Wagstaff in 1981 and since its inception has completed over 6000 projects encompassing all types of piled foundations and ground improvement in a variety of ground conditions for a wide range of civil engineering and building projects. Wagstaff Piling is a wholly Australian-owned enterprise with a vision to be Australia's & New Zealand's leading foundation engineering company by providing clients with the best foundation system for their project, properly installed at a cost-effective price. Wagstaff Piling achieves this outcome by employing technically excellent staff at all levels and by using the most advanced foundation engineering equipment available.







BUSINESS AS UNUSUAL

## EXHIBITORS

### **ACCIONA Geotech | Booth 121**

174 Turner Street, Port Melbourne, VIC 3207 Australia

[www.accionacom.au](http://www.accionacom.au)

Nic Morgan [nic.morgan@geotech.net.au](mailto:nic.morgan@geotech.net.au) +61 3 9624 4200

Specialist Piling, Anchoring & Ground Improvement

### **Allnamics | Booth 126**

Waterpas 98, The Hague, 2495 AT Netherlands

[www.allnamics.com](http://www.allnamics.com)

Marcel Bielefeld [bielefeld@allnamics.com](mailto:bielefeld@allnamics.com) +31 88 255 6264

Allnamics Geotechnical & Pile Testing Experts. Whether as a supplier of hardware and software for foundation testing and pile driving simulation or as a reliable advisor in these areas, Allnamics' activities are founded on 50 years of experience with foundation piles, impact driven as well as vibro driven, onshore as well as offshore. During those years our staff was intimately involved in the development of multiple testing methods, such as low strain dynamic testing, high strain dynamic testing and Rapid Load Testing. With these capabilities, Allnamics is ready to support the installation of deep foundations around the world.



### **Antec Concrete | Booth 124**

35 Forge Street, Blacktown, NSW 2148 Australia

[www.anteconcrete.com.au](http://www.anteconcrete.com.au)

James Cameron [james.cameron@antec.com.au](mailto:james.cameron@antec.com.au) +61 2 9407 8092

Antec is a leading supplier of concrete equipment products for the mining, minerals processing, civil, construction and infrastructure industries in Australia and globally, with a 30 year history. Our philosophy is built on customer service, relationship building and aftersales support.

As exclusive distributors of market leading brands such as Reed, ChemGrout, Clever & Co, PFT, CemenTech volumetric concrete mixers, Staring, Turbosol and FasTrac plus shotcrete & grout equipment in Australia and New Zealand, we offer customised solutions to suit our customer's requirements.

We provide maintenance and repair services as after sales support to ensure the longevity and ongoing reliability of your assets. We also stock and supply a broad range of parts and accessories



### **Austral Construction | Booth 131**

126 Hallam Valley Road, Dandenong, VIC 3175 Australia

[australconstruction.com.au](http://australconstruction.com.au)

Aaron Turner [aaron.turner@australconstruction.com.au](mailto:aaron.turner@australconstruction.com.au) +61 3 9797 2700

Austral Construction are a specialised national construction and engineering contractor with a diverse range of capabilities in Marine Infrastructure, Piling & Civil Engineering. With over 40 years of experience, Austral maximises value by combining technical knowledge and experience with a modern fleet of specialised plant and equipment.







#### **Bauer Equipment Australia Pty Ltd | Booth 104**

36 Bearing Road, Seven Hills, NSW 2147 Australia

[www.bauerequipment.com.au](http://www.bauerequipment.com.au)

Robert Winkler [robert.winkler@bauerequipment.com.au](mailto:robert.winkler@bauerequipment.com.au) +61 2 9674 9691

Specialist foundation engineering machinery from Bauer has been a byword for top performance, quality and continuous innovation since the late 1960s.

BAUER Maschinen GmbH designs and manufactures rotary drilling rigs, foundation cranes, diaphragm wall equipment and all related tools. The Bauer Group and its branches offer a very versatile equipment portfolio for the special foundation, mining and exploration industry. Based in Sydney, BAUER Equipment Australia Pty Ltd was founded in 2010 and is a subsidiary of the BAUER Maschinen GmbH. With the support of our affiliated companies of the BAUER Maschinen Group, we are able to provide the full range of specialist foundation engineering equipment, spare parts and aftersales services for Australia and New Zealand.



#### **Bauer Foundations Australia Pty Ltd | Booth 109**

154 Enoggera Road, Newmarket, QLD 4051 Australia

[www.baueraustralia.com.au](http://www.baueraustralia.com.au)

Serhat Baycan [serhat.baycan@baueraustralia.com.au](mailto:serhat.baycan@baueraustralia.com.au) +61 7 3352 7444

Bauer Foundation Australia, as part of the Bauer Group based in Germany, have world class capability of providing sustainable ground solutions while operating successfully across Australia. Following the "Passion for Progress" motto, we are committed to providing a quality & innovative service to our clients and we have the intention to remain at the forefront of the industry by providing a safe, cost effective quality service. We specialize in Bored Piles up to 3.0 m diameter, Retaining Structures - Diaphragm Walls - Secant Pile Walls - Bored Pile Walls, Cut-off Systems - Slurry Trench Walls - Soil Mix Walls, Soil Improvement - Vibro Compaction - Cement Columns - Stone Columns, Deep Soil Mixing



#### **Casagrande S.p.A. | Booth 114**

Via A Malignani 1, I-33074 Fontanafredda (Pn), Italy

[www.casagrandegroup.com](http://www.casagrandegroup.com)

Giuliano Feruglio [g.feruglio@casagrandegroup.com](mailto:g.feruglio@casagrandegroup.com) +39 0434 9941

Casagrande S.p.A. is a world-class manufacturer of foundation equipment. It designs and produces large diameter piling rigs, equipment for diaphragm walls, hydraulic crawler cranes, small diameter drilling rigs, machines for tunnels, geothermal drill rigs and grouting plants.



#### **Foundation Technologies Australia | Booth 128**

P.O BOX 659, Heathmont, VIC 3135 Australia

[foundationtechnologies.com.au](http://foundationtechnologies.com.au)

Steve Hassett [steve@foundationtechnologies.com.au](mailto:steve@foundationtechnologies.com.au) +61 477 977 800

Foundation Technologies Australia was founded in 2012 to supply and install helical screw piles for the residential and light commercial markets. In addition to helical screw piles for new builds and renovations Foundation Technologies also provides a screw pile underpin system and is the Australian agent for the Patented Shortek shoring system which uses the technology of helical pile installation for shoring. Foundation Technologies can service all of Victoria, Northern New South Wales and South East Queensland.



### **Global Synthetics | Booth 107**

41 Sammut Street, Smithfield, NSW 2164 Australia

[globalsynthetics.com.au](http://globalsynthetics.com.au)

Chris Smith [chris@globalsynthetics.com.au](mailto:chris@globalsynthetics.com.au) +61 2 9725 4321

Global Synthetics Pty Ltd is a leading independent distributor and manufacturer of geosynthetics to the engineering, construction, landscape and building industries throughout Australia and the Pacific region. Global Synthetics Pty Ltd is wholly Australian owned and is well represented by our offices in Brisbane, Sydney, Melbourne, Adelaide and Perth. Global Synthetics provides a full suite of geosynthetic products including geotextile, geogrids, gabions, geosynthetic clay liners, dewatering tubes, turf reinforcement mats and drainage solutions.



### **HMI | Booth 122**

133 Bluestone Circuit, Seventeen Mile Rocks, QLD 4073 Australia

[www.hmi.com.au](http://www.hmi.com.au)

Donald Lovell [donaldl@hmi.com.au](mailto:donaldl@hmi.com.au) +61 408 202 320

HMI supplies wear parts, foundation drilling tools and wear protection to the foundation and ground engineering industry with world leading brands delivering with state-of-the-art production technologies utilising the finest quality materials. This range is supported by locally manufactured custom products. To better serve their clients, HMI hold stock ready for dispatch in Sydney and Brisbane in Australia, and Auckland and Christchurch in New Zealand.



### **Insitutek | Booth 135**

532 Black Mountain Road, Black Mountain, QLD 4563 Australia

[www.insitutek.com](http://www.insitutek.com)

Robin Power [robin.power@insitutek.com](mailto:robin.power@insitutek.com) +61 404 114 751

Insitutek was founded to transform geotechnics, earthworks and pavement construction in Australia, New Zealand and the Pacific region. We are doing this through insitu testing methods and soil stabilisation.



### **IQIP Australia | Booth 108**

9-11 Staple Street, Seventeen Mile Rocks, QLD 4073 Australia

[www.iqip.com](http://www.iqip.com)

Doug Cleland [cleland@iqip.com](mailto:cleland@iqip.com) +61 438 046 195

IQIP offers total solutions for construction projects in the Offshore Wind, Coastal & Civil and Oil & Gas markets, as well as Decommissioning. In addition to supplying innovative and high-quality equipment, we continuously invest in operating safely and in an environmentally friendly manner. With consultancy, engineering, production and installation, IQIP offers reliable tailor-made solutions to help customers optimise their operational efficiency and reduce project risks. This combination of craftsmanship and passion makes IQIP a reliable partner, building the world for the next generation together with our customers, with the highest care for the environment.



### **Ischebeck Titan Australia Pty Ltd | Booth 123**

197 Queens Road, Kingston, QLD 4114 Australia

[www.ischebeck-titan.com.au](http://www.ischebeck-titan.com.au)

Tom Glasby [tom.glasby@ischebeck-titan.com.au](mailto:tom.glasby@ischebeck-titan.com.au) +61 7 3208 1158

Ischebeck Titan is the world pioneer of self drilling hollow bar micropiles for both vertical piling applications as well as a wide range of retaining, slope remediation and ground anchor solutions. All products are manufactured to the highest standards of quality at Ischebeck's German production facility. In particular the complete anchor system is tested to an exacting standard on yield strength, elongation at maximum load and energy absorption.



### **Junttan Pty Ltd | Booth 111**

39 Chapman Road, Vineyard NSW 2765 Australia

[www.junttan.com](http://www.junttan.com)

Arteen Mosad [arteen.mosad@junttan.com](mailto:arteen.mosad@junttan.com) +61 423 319 411

Junttan designs and manufactures hydraulic piling equipment. The Junttan product range is comprised of the world's leading pile driving rigs, multipurpose piling and drilling rigs, deep stabilization rigs, hydraulic impact hammers, rotary heads and power packs.



### **Kennametal | Booth 132**

3/3974 Pacific Highway, Loganholm, QLD 4129 Australia

[kennametal.com](http://kennametal.com)

Patrick Younes [patrick.younes@kennametal.com](mailto:patrick.younes@kennametal.com) +61 1800 365 826

At the forefront of advanced materials innovation for more than 75 years, Kennametal Inc. is a global industrial technology leader delivering productivity to customers through materials science, tooling and wear-resistant solutions. Customers across aerospace, earthworks, energy, general engineering and transportation turn to Kennametal to help them manufacture with precision and efficiency.



### **Kephix | Booth 103**

P.O. Box 230, Forestville, NSW 2087 Australia

[www.kephix.com.au](http://www.kephix.com.au)

Phillip McPherson [phil.mcpherson@kephix.com.au](mailto:phil.mcpherson@kephix.com.au) +61 477 771 049

Kephix - Supply of CMI plastic sheet piles and bespoke international procurement solutions.



### **Landpac Technologies Pty Ltd | Booth 134**

25 York Road, Ingleburn, NSW 2565 Australia

[www.landpac.com.au](http://www.landpac.com.au)

Matthew Clenton [matthewclenton@landpac.com.au](mailto:matthewclenton@landpac.com.au) +61 438 656 927

Landpac specializes in providing and implementing ground improvement solutions on compressible unstable sub-grades with the use of Impact Compaction. Over the 25 years since our inception, Landpac Australia has delivered ground improvement solutions and provided impact compaction services throughout Australia and the Asia-Pacific region. The Landpac group has operations in Australia, Singapore, North America, United Kingdom, South Africa, Asia and the Middle East.



### **Liebherr-Australia | Booth 127**

1 James Erskine Drive, Erskine Park, NSW 2759 Australia

[www.liebherr.com.au](http://www.liebherr.com.au)

Andrew Wilder [andrew.wilder@liebherr.com](mailto:andrew.wilder@liebherr.com) +61 2 9852 1831

The extensiveness of Liebherr's construction machines program is like no other and with deep foundation, Liebherr offers cutting-edge piling and drilling equipment as well as attachments such as vibrators, hammers or slurry wall cutters. Liebherr deep foundation machines are ideally suited for the construction of cast-in-place piles and slurry walls, for the installation of sheet piles, or for soil improvement. Maximum performance, a wide range of applications and advanced assistance systems for improved operator comfort and increased safety are the hallmarks of Liebherr deep foundation equipment.





### **Menard Oceania | Booth 106**

11 Lyonpark Road, Macquarie Park, NSW 2113 Australia

[www.menardoceania.com.au](http://www.menardoceania.com.au)

Philippe Vincent [pvincent@menard.com.au](mailto:pvincent@menard.com.au) +61 417 670 281

At Menard Oceania, we design and construct ground engineering solutions that set the standard for ground improvement within the region. Our scope includes small to large infrastructure-based solutions across a broad range of market segments for private and public stakeholders, including Transport, Dams, Ports and Coastal Infrastructure, Industrial and Commercial Buildings, Heavy Industry and Mining. Menard Oceania is the Australian subsidiary of Menard and part of Soletanche Freyssinet Group, which are world leaders in geotechnical, environmental and civil engineering construction.



### **Piletest / Pilecom Equipment | Booth 102**

7 Giborei Israel Boulevard, Netanya, 4250407 Israel

[www.piletest.com](http://www.piletest.com)

Boyd Cousins [boyd.cousins@pilecom.com.au](mailto:boyd.cousins@pilecom.com.au) +972 9 957 8992

Piletest develops & supplies NDT instruments for deep pile foundations: PET for pile integrity test, CHUM for Crosshole ultrasonic test, BIT for Pile & Borehole Inclination Test and PSI for Parallel Seismic test.



### **Pilequip | Booth 129**

39 Chapman Road, Vineyard, NSW 2765 Australia

[pilequip.com.au](http://pilequip.com.au)

Michael Procter [mprocter@pilequip.com.au](mailto:mprocter@pilequip.com.au) +61 2 9838 3144

Pilequip is the Australian arm of the Dieseko Group, the worldwide leading developer, manufacturer and provider of innovative hydraulic foundation equipment. With renowned brands including ICE, PVE & Woltman, Pilequip Australia represents over 20 years of powerful high-tech equipment for the Australian foundation industry.



### **Piletest Pty Ltd | Booth 130**

1 Ashgrove Crescent, Ashgrove, QLD 4060 Australia

[piletest.com.au](http://piletest.com.au)

Ross Evans [r.evans@piletest.com.au](mailto:r.evans@piletest.com.au) +61 7 3366 2555

Piletest is a deep foundation testing and analysis company that offers a wide range of deep foundation quality assurance services for piles of all types. Working since 1987, Piletest has over 35 years of experience utilising deep foundation testing technology including PDA, CAPWAP, PIT, CSL, TIP, SHAPE, SQUID and more.



### **Piling Solutions Australia | Booth 110**

319 Horsley Road, Milperra, NSW 2214 Australia

[www.psau.com.au](http://www.psau.com.au)

Guy Cook [gcook@psau.com.au](mailto:gcook@psau.com.au) +61 2 8761 2080

Steel Sheet Pile and Steel Tube Supply



### **RGE | Booth 101**

Unit 1, 274 Captain Cook Drive, Kurnell, NSW 2231 Australia

[www.rixge.com.au](http://www.rixge.com.au)

Iain Robertson [irobertson@rixge.com.au](mailto:irobertson@rixge.com.au) +61 455 308 308

Ground engineering contractor: Design & Construct, Ground anchors, Mini piles, Jet Grouting, Soil Mixing, Slurry Cut Off Walls, Permeation Grouting

### **Rocscience, Inc. | Booth 112**

10605/36 Old Burleigh Road, Surfers Paradise, QLD 4217 Australia

[www.rocscience.com](http://www.rocscience.com)

Dr. Alison McQuillan [alison.mcquillan@rocscience.com](mailto:alison.mcquillan@rocscience.com) +61 418 285 089

Since 1996, Rocscience has been a company focused on bridging the gaps in analysis, design, and visualization tools for the mining and civil engineering industries. Born as a spin-off company from the University of Toronto, our software development combines innovation and research, allowing us to develop world-class software solutions that work for you today and will evolve to meet your needs tomorrow. Our motto "Geotechnical tools, inspired by you" means we are continuously listening to your specific geotechnical challenges so that we can build tools to help you overcome them. Whether you're focused on slope stability, excavation design, or foundation analysis, our comprehensive suite of 18 programs means that no matter what your needs are, we have a software solution for your projects.



### **Superior Foundation Equipment | Booth 120**

7530 114th Avenue Southeast, Calgary, AB T2C 4T3 Canada

[www.SuperiorNA.ca](http://www.SuperiorNA.ca)

Gina Huelsman [ginah@superiorna.ca](mailto:ginah@superiorna.ca) +1 913 302 1301

Superior Foundation Equipment, a division of Superior North America, Inc., is the #1 stocking distributor for Eskridge Hydraulic Drive Heads, for utility, construction, and helical pile installation, tooling and attachments. SFE also distributes CMI, Concept Measurement, Inc.. TORQ-Spool and Hub are torque monitoring and data logging systems that can fit any type of drive head. SFE has excellent customer service that can help with tooling solutions as well.



### **Tensar / Geofabrics Australasia | Booth 133**

83-93 Canterbury Road, Braeside, VIC 3195 Australia

[www.geofabrics.co](http://www.geofabrics.co)

Rajesh Bhavsar [r.bhavsar@geofabrics.com.au](mailto:r.bhavsar@geofabrics.com.au) +61 3 8586 9167

Geofabrics is in the business of geosynthetic engineering and building key infrastructure across Australasia for over 40 years. We are focused on developing new and innovative products and providing our customers with world's best solutions to complete civil projects. We work to protect, contain and secure the physical environment using smart geotextile and geosynthetic products.

Our vision is to be a solution provider, to supply products that demonstrate cost savings, superior technical performance, safer operations and better environmental outcomes. We are the only Australian manufacturer of geosynthetic products, with the largest distribution throughout Australasia.

Our industry partnership with Tensar has been used successfully on infrastructure projects that help deliver temporary and permanent works. Tensar TriAx Geogrids are often used to mechanically stabilise granular materials in access roads, site compounds and working platforms while their range of systems for soil retaining walls, bridge abutments and reinforced slopes can also help maximise construction areas for both temporary and permanent applications.



# Thank You to Our Sponsors

## Diamond



## Platinum



## Gold



## Silver



## Bronze



## Student



## Lanyard



## Pen





INTERNATIONAL CONFERENCE

**ICOOG**

ORGANIZATION FOR GROUTING



# 6<sup>th</sup> International Conference on Grouting and Deep Mixing January 15-18, 2023

New Orleans Marriott | New Orleans, Louisiana

Deep Foundations Institute (DFI) and the International Conference Organization for Grouting (ICOOG), with support from Geo-Institute's Grouting Committee, are presenting the 6th International Conference on Grouting and Deep Mixing, January 15-18, 2023, in New Orleans. This legacy event celebrates 40 years of grouting technology and practices, covering all types of grouting for foundation projects.



## Conference Highlights

- Five Keynote Presentations
- Parallel Tracks of Technical Sessions
- Panel Discussions
- Exhibit Hall
- Social and Networking Opportunities
- G.R.E.A.T.S Luncheon



Learn more about exhibiting, sponsoring and attending at [www.dfi.org/GROUT2022](http://www.dfi.org/GROUT2022)





Deep Foundations Institute  
326 Lafayette Avenue  
Hawthorne, NJ 07506, USA  
+1 (973) 423-4030  
events@dfi.org



**PILING AND FOUNDATION  
SPECIALISTS FEDERATION**

Piling and Foundation  
Specialists Federation  
235 Charles Street  
Launceston TAS 7250, Australia  
+61 0425 209 401  
admin@pilingfederation.org.au